



# iPF700

## Quick Product Overview

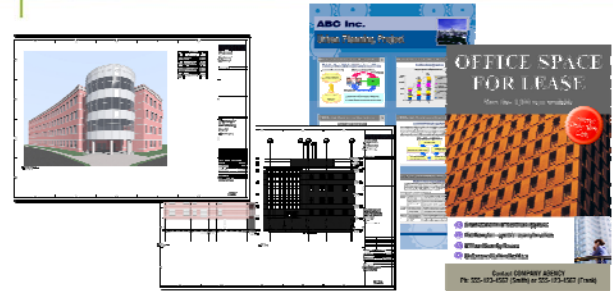
TRAFFIC LAWS DO NOT APPLY!

Introducing the imagePROGRAF® iPF700 - This 36" printer outputs crisp color line drawings at record-breaking speeds plus it effortlessly prints borderless posters, hi-res color graphics and deal-closing design renderings. The imagePROGRAF iPF700 is "the next big thing" in large format printing.



For **Technical Document Applications**, the iPF700 utilizes over 5,000 nozzles of matte black pigment ink and 4 color dye inks to output crisp, color or monochrome line drawings and design renderings at remarkable speeds. The included software RIP allows for the precise printing of HP-GL/2 and Postscript files while the HDI driver offers a Heidi interface that allows for direct printing from AutoCAD.

For **General Graphics Applications**, the iPF700 combines Canon PosterArtist poster creation software and robust printing software with a "Free Layout" (nesting) feature, an imageRUNNER® enlargement function, borderless printing capability and up to 2400 x 1200dpi output.

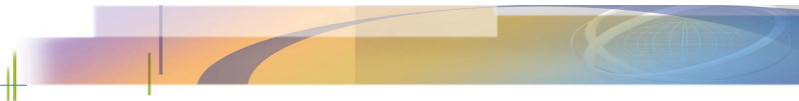


### At-a-Glance Specifications

<b>Printer Width / Stand</b>	36" / Stand Included				
<b>Ink Type</b>	Dye/Pigment ink set Dye { C, M, Y, BK } Pigment {MBK, MBK}				
<b>Ink Tank Size</b>	130ml per color				
<b>Max Resolution</b>	2400 x 1200 dpi				
<b>Print Head</b>	End-user replaceable, PF-01				
<b>Droplet Size</b>	4 Picoliter (fixed)				
<b>Memory (RAM)</b>	256MB				
<b>Standard Interface</b>	USB 2.0 & 10/100-Base T/TX				
<b>Optional Interface</b>	IEEE1394 (FireWire Card)				
<b>Borderless Printing</b>	All four sides with specified roll sizes				
<b>Media Thickness</b>	0.07 – 0.8mm (2.8 – 31.4mil)				
<b>Line Accuracy</b>	±0.1% or less				
<b>Driver Software</b>	Windows® 98SE/ME/2000/XP/2003 Server, Macintosh® OS 9.1/X 10.2/10.3/10.4				
<b>Included Software</b>	Printer Driver 2006, PhotoPRINT select for imagePROGRAF ver. 2.5, Printer Driver Extra Kit (Free Layout, imageRUNNER Linking Function) PosterArtist 2006, HDI Driver				
<b>Print Languages</b>	<b>Print Driver</b> GARO (Canon Proprietary) <b>PhotoPRINT Select</b> – Adobe® PostScript® Level 3, PDF, TIFF, JPEG, BMP, PC only-HP-GL/2, DWG, DXF				
<b>Roll Capacity (Single Roll)</b>	Core Sizes: 2" or 3" core (with optional 3" core spool) Maximum Roll Outer Diameter: 5.9" (150mm)				
<b>CAD Line Drawing Print Speeds<sup>1</sup></b>	Paper Type	Print Mode	Resolution	Print Size	Print Time (minutes)
	Plain Paper	Draft	1200x1200	Ao	1.0
		Standard	1200x1200	Ao	1.4
	Coated Paper	Draft	1200x1200	Ao	1.4
Standard		1200x1200	Ao	2.6	
<b>Graphics ISO Image Print Speeds<sup>2</sup></b>	Paper Type	Print Mode	Resolution	Print Size	Print Time (minutes)
	Plain Paper	Draft	1200x1200	Ao	1.1
		Standard	1200x1200	Ao	1.8
	Coated Paper	Standard	1200x1200	Ao	3.2
		High	2400x1200	Ao	7.3
		Highest	2400x1200	Ao	11.3
Glossy Paper	Standard	1200x1200	Ao	4.9	
	High	2400x1200	Ao	7.4	

1) Test Conditions CAD: (Image file was produced by AutoCAD 2004) Pentium4 3.2 GHz / RAM: 1 GB : Windows XP SP2: USB 2.0 Hi-Speed: AutoCAD2004 LT: HDI120\_iPF700(FC): Cottage plan and elevation.dwg": 795 x 1135.4 mm: - From start of first band printing to end of printed media cutting. - Data processing and data transfer time are not included. After printing 3 copies, the average values of the 2nd and the 3rd prints shall be the throughput. The figures are round up to one decimal place

2) Test Conditions Graphics: Pentium 4 3.2 GHz / RAM: 1 GB: Windows XP SP2: USB 2.0 Hi-Speed: Adobe Photoshop 7.0: Version 3.10 (MR): SCID N5 bicycle): 827 x 1033.8 mm: - From start of first band printing to end of printed media cutting. - Data processing and data transfer time are not included. 1st printing: From clicking [Print] on the printer driver to a print discharged. After printing 3 copies, the average values of the 2nd and the 3rd prints shall be the throughput. The figures are round up to one decimal place.



## Technical Document Printing

**Remarkable Printing Speeds** – D-Size color prints in around 30 seconds! The remarkable speed of the iPF700 is truly exceptional. The technology behind the speed includes a print head that has over 15,000 nozzles, 2 channels of matte black and a new L-COA controller to drive it all.

**Deep Black, Smudge-Resistant Lines** – The iPF700 utilizes a unique combination of pigment and dye ink, (reactive ink) to print fine, abrasion-resistant lines. This combination was designed for industry professionals where the demand to generate deep, defined and durable lines are prominent. This makes the iPF700 the ideal candidate for technical line-work, CAD, mapping, GIS and AEC workflows.

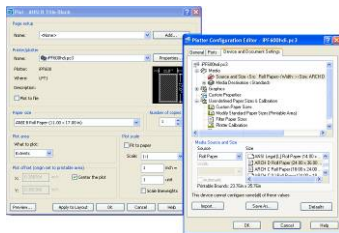


This combination was designed for industry professionals where the demand to generate deep, defined and durable lines are prominent. This makes the iPF700 the ideal candidate for technical line-work, CAD, mapping, GIS and AEC workflows.

This makes the iPF700 the ideal candidate for technical line-work, CAD, mapping, GIS and AEC workflows.

**PLT Files? HP/GL-2 Support Right Out-of-the-Box** - Print HP-GL/2, Postscript, DWG, DXF, TIFF, TIFF/G4, and many other file types through Canon's included software RIP, PhotoPRINT Select 2.5. For a full list of supported file types, please see the product brochure.

**AutoCAD Users** – Canon includes a direct interface for AutoCAD in the box with every iPF700 printer. This true Heidi driver allows the user to print directly to the device via AutoCAD. Users can expect sharp line renderings, accurate pen widths, crisp corners and intersections and much more when printing through this professional HDI driver.



**No Hassle Print Head** – One of Canon's core competencies is developing durable, revolutionary thermal inkjet print heads. With over 15,000 nozzles, this user-replaceable print head allows the iPF700 to lay down ink precisely and accurately for crisp, even lines and smooth, fine graphics. Canon's new print head (PF-01) is extremely durable and long lasting. However, if it does ever need to be replaced, the user can complete the process themselves in minutes with no service call and no hassle.

**Network Printing Right Out Of The Box** – The iPF700 comes standard with a network interface built into it, so it is network ready as soon as you turn it on.

**Large LCD Panel** – The iPF700 is one of the first imagePROGRAF models to feature a new large LCD panel. New menu tree options make navigation easier and more efficient, while basic printer operations, like loading paper and changing ink are illustrated by animated actions on the display.



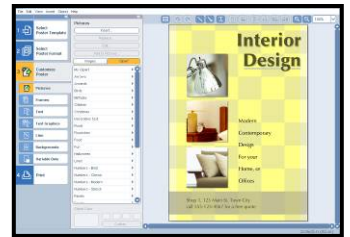
## General Graphics Printing

**Included Postscript® 3 Support through PhotoPRINT** – This user-friendly front-end software that comes with the iPF700 has Postscript Level 3 capabilities, easy drag-and-drop printing, impressive nesting functions, accurate print preview features and a fully licensed Pantone color library. PhotoPRINT Select is supported by both Windows® and Macintosh® operating systems. For a full list of supported file types, please see the product brochure.



**Need Color? Need Quality? No Problem!** – The iPF700 utilizes 4 newly developed dye inks to produce bold and expressive color prints with exceptional quality. Print images and graphics at up to 2400 x 1200 dpi. Create meaningful posters, impactful presentations and signage and much more with this versatile device.

**Create Posters right out of the box (Windows Only)** – Canon PosterArtist 2006, an included 2-disc software package was developed by Canon specifically for the *Creating, Processing and Printing* of large format posters. It is an easy to use, template-based poster creation application, designed with the Microsoft® Office™ skill level user in mind. It comes standard with a library of over 150 pre-designed templates and over 1,500 hi-resolution, royalty-free images.



**Scan-to-Print, Nesting and more Printer Driver 2006** is a Windows® and Macintosh® driver that incorporates easy and advanced settings, simplified page setup options, 1-touch borderless printing, expanded color settings, ICC profile options and much more into a printer driver that is intuitive and easy to operate, but still gives even the most advanced users the tools needed to stay productive. For Windows users, the free-layout feature enables nesting and custom layouts of images or files of nearly any type. Even the most novice user can create advanced nested layouts of images, presentation slides, Microsoft® WORD documents, PDFs, and many other types. For Color imageRUNNER customers, this new imagePROGRAF driver allows for easy enlargement printing by accommodating scanned files sent from the imageRUNNER device's Universal Send function.

**No Cutting or Trimming!** The iPF700 can output full bleed edge-to-edge prints on all 4 sides in minutes on most common roll sizes. This is commonly referred to as borderless printing.

**How much paper is left?** – The imagePROGRAF is capable of tracking how much paper is remaining on the roll, preventing print jobs from being ruined. It prints the media information (in text and barcode) directly on the roll, before it is removed from the printer. The next time that roll is loaded, the imagePROGRAF will read the barcode and the length information will be applied automatically.

